



COVID-19

novel coronavirus

Select Laboratory Products
for Use in Novel Coronavirus
Testing Procedures

DiamondPRO™ high-performance pipettor

The Diamond® PRO™ pipettor is designed with a thermo plastic elastomer grip that minimizes fatigue of hands and fingers. The unique padding not only reduces thumb stress, but also minimizes the transfer of body heat to the pipette, resulting in consistent accuracy.

The pipettors come with a certificate of calibration, a recalibration tool kit and a one year warranty. They are calibrated in an ISO 17025 facility.

- Autoclavable tip cone and lower section assembly
- 1 Year warranty
- Ergonomic, lightweight and soft plunger movement provides added comfort and minimizes fatigue
- Streamlined tip ejector designed for access to narrow-necked tubes and containers
- Two step plunger operation allows you to use both forward and reverse pipetting techniques
- Color coded for easy identification

Adjustable Volume

Item #	Volume (µl)	Color	Tip Group*
3311-1	0.1-2.5	Red	A
3311-10	0.5-10	Red	A
3311-20	2-20	Red	A
3311-200	20-200	Lavender	B
3311-1000	100-1000	Orange	C

Fixed Volume

Item #	Volume (µl)	Color	Tip Group*
3312-10	10	Red	B
3312-200	200	Lavender	B
3312-1000	1000	Green	C

*Refer to Pipette Tip Selection Guide below. Use the Tip Group Code to choose a suitable pipette tip on page 2.



Item #3310-6
Pipettor Stand holds up to 6 Diamond® or Diamond® Pro single channel pipettors. 4-Place stand also available. Each sold separately.

TIP SELECTION GUIDE

Tip Group	Item#	Volume	Color	Sterility	Package Type	Unit
A	Filter Tips, Low Retention (Graduated)					
	150800	0.1-10 µl	Natural	Sterile	96 Tip Rack	960
	150803	0.1-10 µl	Natural	Sterile	96 Tip Rack	960
	150805	0.1-20 µl	Natural	Sterile	96 Tip Rack	960
B	150810	1-20 µl	Natural	Sterile	96 Tip Rack	960
	150814	1-50 µl	Natural	Sterile	96 Tip Rack	960
	150815	1-100 µl	Natural	Sterile	96 Tip Rack	960
	150820	1-200 µl	Natural	Sterile	96 Tip Rack	960
	150825	1-300 µl	Natural	Sterile	96 Tip Rack	960
C	150835	1-1000 µl	Natural	Sterile	96 Tip Rack	576
	150838	1-1250 µl	Natural	Sterile	96 Tip Rack	576

Additional model and volume pipettors are available. Please contact our Sales Department for information.

DiamondAdvance™ Multi-Channel

The Diamond Advance™ 8-channel and 12-channel pipettors are simple to operate, light weight and extremely comfortable to use. They feature a 360° rotating manifold which provides universal right or left hand use. Utilizing an elastomer grip, fatigue of the hands and fingers is minimized. The unique padding minimizes the transfer of body heat to the pipette, resulting in consistent accuracy. Each pipettor is color coded for quick volume identification. The pipettors are calibrated in an ISO 17025 accredited laboratory and are offered with a 3 year warranty.

- Removable, fully autoclavable manifold
- Each channel is calibrated individually
- 3 year warranty
- Light-weight and ergonomic design
- Precise adjustment of dispensing volume
- Tip ejector



8-Channel/Adjustable Volume

Item #	Volume (µl)	Increments (µl)	Color	Tip Group*
3344-50	5-50	0.1	Yellow	B
3344-100	10-100	0.1	Blue	B
3344-200	20-200	0.2	Lavender	B
3344-300	30-300	0.2	Orange	B

12-Channel/Adjustable Volume

Item #	Volume (µl)	Increments (µl)	Color	Tip Group*
3345-50	5-50	0.1	Yellow	B
3345-100	10-100	0.1	Blue	B
3345-200	20-200	0.2	Lavender	B
3345-300	30-300	0.2	Orange	B



Item #3348

Carousel stand holds up to 6 Diamond Advance single channel pipettors. Sold separately.

Manifold rotates 360° for convenient pipetting from any angle

Pipette Tips

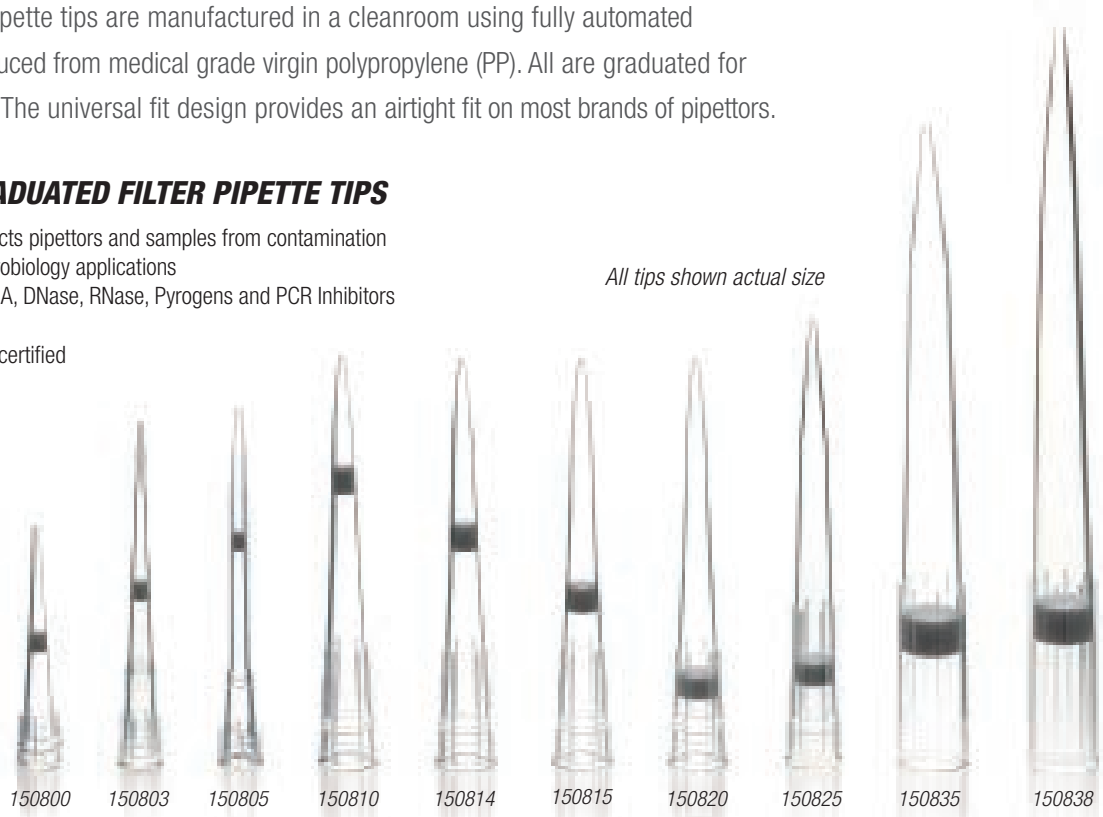
Globe Scientific **CERTIFIED** pipette tips are certified free from Human DNA, DNase, RNase, Pyrogens and PCR Inhibitors.

These premium quality pipette tips are manufactured in a cleanroom using fully automated equipment. They are produced from medical grade virgin polypropylene (PP). All are graduated for accurate measurements. The universal fit design provides an airtight fit on most brands of pipettors.

LOW RETENTION GRADUATED FILTER PIPETTE TIPS

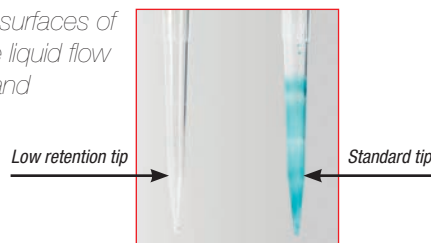
- Specially designed filter protects pipettors and samples from contamination
- Ideal choice for PCR and microbiology applications
- Certified free from Human DNA, DNase, RNase, Pyrogens and PCR Inhibitors
- Heavy-metal free
- USP Class IV and ISO 10993 certified
- Available sterile in racks

All tips shown actual size



Item #	Volume Range	Tip Length	Tip Color	Sterility	Packaging	Unit
150800	0.1 - 10µl	31mm	Natural	Sterile	Racked	96 Tips/Rack, 10 Racks/Box
150803	0.1 - 10µl	45mm	Natural	Sterile	Racked	96 Tips/Rack, 10 Racks/Box
150805	0.1 - 20µl	45mm	Natural	Sterile	Racked	96 Tips/Rack, 10 Racks/Box
150810	1 - 20µl	54mm	Natural	Sterile	Racked	96 Tips/Rack, 10 Racks/Box
150814	1 - 50µl	54mm	Natural	Sterile	Racked	96 Tips/Rack, 10 Racks/Box
150815	1 - 100µl	54mm	Natural	Sterile	Racked	96 Tips/Rack, 10 Racks/Box
150820	1 - 200µl	54mm	Natural	Sterile	Racked	96 Tips/Rack, 10 Racks/Box
150825	1 - 300µl	59mm	Natural	Sterile	Racked	96 Tips/Rack, 10 Racks/Box
150835	1 - 1000µl	84mm	Natural	Sterile	Racked	96 Tips/Rack, 6 Racks/Box
150838	1 - 1250µl	98mm	Natural	Sterile	Racked	96 Tips/Rack, 6 Racks/Box

The super hydrophobic internal surfaces of these low retention tips optimize liquid flow for maximum sample recovery and accuracy.



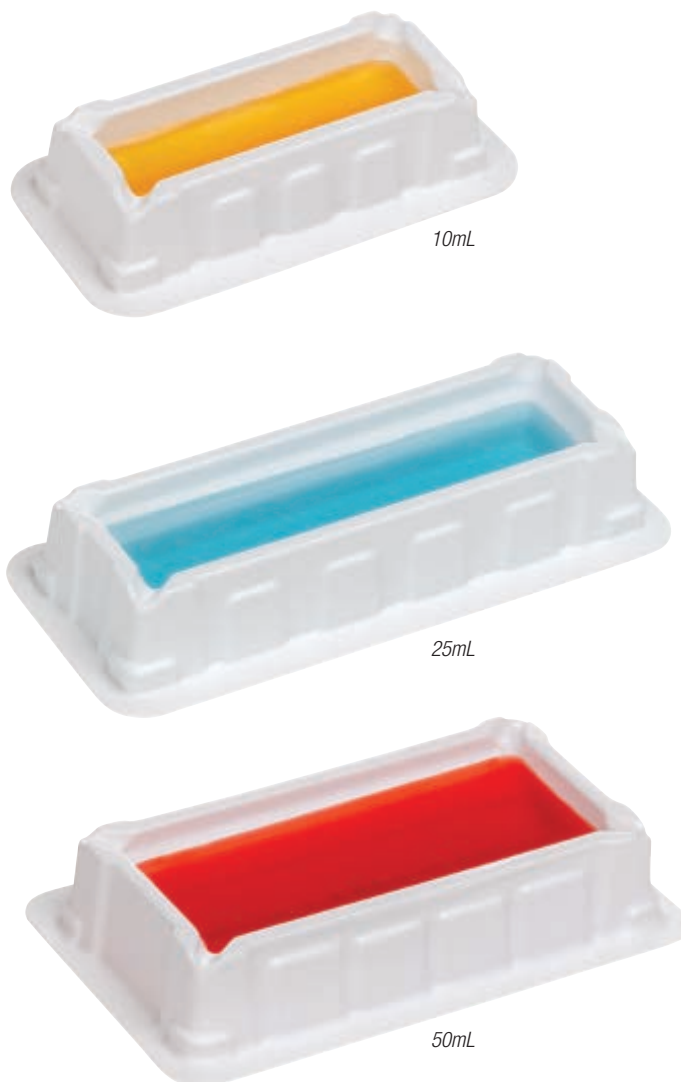
Packaged in color coded racks, 96 tips per rack.

DISPOSABLE REAGENT RESERVOIRS

These reagent reservoirs are suitable for virtually all of your lab's sample preparation and aliquoting needs. Design enhancements include pour spouts at each corner, a rigid sidewall design and graduations for easy volume reference. Sterile variants are irradiated to guarantee a sterility assurance level (SAL) of 10^{-6} . Available volumes of 10mL, 25mL and 50mL ensure there is a volume and packaging option to fit almost every application. Individual, bulk and five-pack options are available.

- Pour spouts at every corner
- Rigid sidewall design
- Wide, stable base
- Lot traceability
- Compatible with multi-channel pipettors
- Bulk sterile and sterile options available
- Molded graduations for easy volume reference
- Easily stacked using minimal storage space with easy separation
- Available in 10mL, 25mL and 50mL volumes
- Design allows for high level of solution recovery
- DNase, RNase, pyrogen, animal materials and latex-free
- Made from virgin medical-grade polystyrene

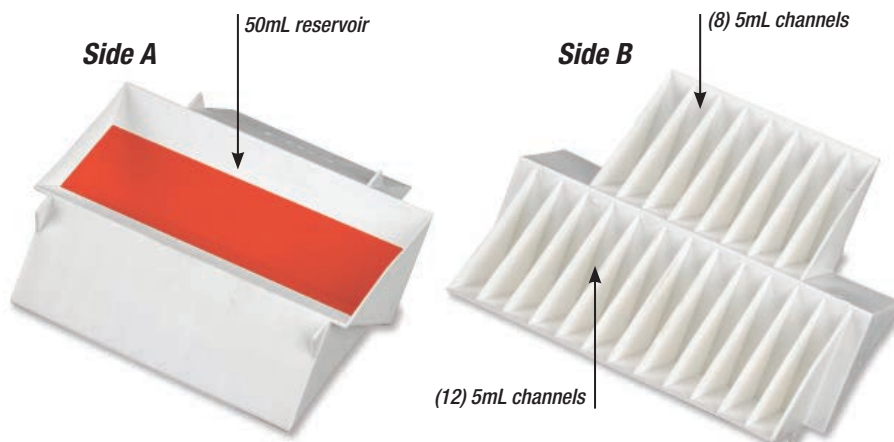
Item #	Description	Unit
14010B	10mL, non-sterile, bulk pack, 100/box	100
140101	10mL, sterile, individually wrapped, 1/bag, 50 bags/case	50
140105	10mL, sterile, 5/bag, 40 bags/case	200
14025B	25mL, non-sterile, bulk pack, 100/box	100
140251	25mL, sterile, individually wrapped, 1/bag, 50 bags/case	50
140255	25mL, sterile, 5/bag, 40 bags/case	200
14050B	50mL, non-sterile, bulk pack, 100/box	100
140501	50mL, sterile, individually wrapped, 1/bag, 50 bags/case	50
140505	50mL, sterile, 5/bag, 40 bags/case	200



REVERSIBLE UNIVERSAL REAGENT RESERVOIR

- One reservoir to work with single, eight, and twelve channel pipettors
- Three different reservoir sections to meet the needs of most laboratory operations:
 - One 50mL single reagent reservoir
 - One reservoir with 8 individual 5mL reagent channels
 - One reservoir with 12 individual 5mL reagent channels
- Manufactured from polypropylene (PP) and autoclavable for re-use

Item #	Description	Unit
140100	Universal reagent reservoir, polypropylene (PP)	Each



140100 — This versatile reagent reservoir is designed to work equally well with single, eight and twelve channel pipettors

Microcentrifuge Tubes

0.5mL, 1.5mL & 2.0mL Microcentrifuge Tubes In Self-Standing Bags

Premium grade materials and an automated, touch free manufacturing process ensure both performance and savings!



Tubes shown
actual size

- Manufactured from FDA approved resins
- Manufactured in a class 100,000 cleanroom and certified to be free from RNase, DNase, DNA and Pyrogens
- Heavy metal free
- Made from USP Class VI medical grade polypropylene with excellent clarity
- Supplied in resealable, tamper-evident self-standing bags
- Large, clearly printed graduations
- Frosted writing area on each tube
- Smooth surfaces won't catch or tear gloves
- Thin cap membrane for trouble-free needle piercing
- Fit all standard and high capacity centrifuge rotors
- Can be centrifuged at up to 20,000 RCF
- Withstand temperatures from -80°C to +121°C

Item #	Description	Unit
111554	0.5mL, polypropylene (PP), natural	500
111564	1.5mL, polypropylene (PP), natural	500
111574	2.0mL, polypropylene (PP), natural	500

Available in 7 additional colors —
amber, blue, green, orange, red, violet and yellow.



Supplied in re-sealable, tamper evident stand up bags.

LOT CERTIFIED MICROCENTRIFUGE TUBES

Lot Certified RNase Free, DNase Free, Human DNA Free, Pyrogen Free, ATP Free and PCR Inhibitor Free

These 1.5mL and 2mL microcentrifuge tubes are lot certified to be **RNase free, DNase free, human DNA free, Pyrogen free, ATP free and PCR inhibitor free!** The tubes are produced from polypropylene (PP) and feature an attached leak-resistant snap cap. Each tube is molded with precise graduation marks for accurate measurements. The tubes are packaged in bags of 500 and offered at fantastic prices!

Item #	Description	Unit	Centrifuge Max. RCF
111562	1.5mL with snap cap, graduated, polypropylene (PP)	500	25,000 x g
111572	2mL with snap cap, graduated, polypropylene (PP)	500	25,000 x g



DiamondPerfectMark™

DIAMOND® PERFECTMARK™ LABORATORY MARKER

The Diamond® PerfectMark™ is a permanent laboratory marker specially suited for laboratory marking applications. The fine tip makes it easy to write on very small surfaces like histology cassettes, microscope slides and test tubes. The marker is smear-proof, waterproof, odorless and light-resistant. The permanent ink is resistant to most laboratory chemicals & solvents

- Extra fine 0.75mm nib is perfect for clear labeling on small surfaces.
- Works well on smooth and transparent surfaces like microscope slides, test tubes and labware
- Quick-drying, smudge-proof, waterproof, lightfast and low-odor.
- Resistant to abrasion and high temperatures
- Black ink

Item #	Description	Unit
1000	Diamond® PerfectMark Laboratory Marker, black	10/Box



Microtube Racks

REVERSIBLE RACKS FOR MICROTUBES

- Autoclavable polypropylene (PP)
- Excellent rack for benchtop use or freezer storage
- 80/60 well rack capacities:
 - 80-place for 1.5mL and 2mL tubes
 - 60-place for 0.5mL and 0.2 mL tubes
- 96 well rack capacities:
 - 96-place for 1.5mL and 2.0mL tubes
 - 96-place for 0.5 mL and 0.2 mL tubes
- 96 well racks have translucent cover to allow viewing of samples while they are protected
- Eight color options for sample and benchtop organization

Dimensions (L x W x H):

80/60 Well: 228 x 67 x 27mm (9" x 2.6" x 1")

96 Well: 221 x 131 x 46mm (8.7" x 5.2" x 1.8")

**Fully
Autoclavable**

80/60 Well Reversible Racks

Item#	Color	Unit
456350B	Blue	5
456350C	Natural	5
456350G	Green	5
456350N	Orange	5
456350P	Pink	5
456350R	Red	5
456350Y	Yellow	5
456350AST	Assorted*	5

96 Well Reversible Racks with Cover

Item#	Color	Unit
456355B	Blue	5
456355C	Natural	5
456355G	Green	5
456355N	Orange	5
456355P	Pink	5
456355R	Red	5
456355Y	Yellow	5
456355AST	Assorted*	5

*Assorted pack colors: Blue, green, orange, pink and yellow



96 Well reversible racks with covers

Additional styles are available.
Please contact our Sales Department or visit www.gobescientific.com.

MINI COOLERS

Globe Mini Coolers keep reagents, enzymes, and other temperature sensitive items cool on the bench for up to one hour. An excellent alternative to ice buckets, Mini coolers are filled with a non-toxic gel contained in a tough polycarbonate shell. The insulating gel ensures consistent temperature on the bench or in the freezer as protection from temperature fluctuations. Coolers are supplied with a keyed lid with printed grids for easy sample identification. Non-skid feet keep the cooler securely in place on the bench. Coolers with gel filled lids provide extra temperature stability. 0 Degree coolers should be frozen for 24 hours at -5°C to -10°C before use, while -20 degree coolers should be frozen for 24 hours at -20°C to -25°C before use.



0°C Mini Coolers

Item #	Description	Array	Size (mm)	Material	Unit
454001	12 Place for 1.5mL tubes	3 x 4	151 x 108 x 125	Polycarbonate	Each
454003	32 Place for 1.5mL tubes	4 x 8	243 x 157 x 146	Polycarbonate	Each
454003GC	32 Place for 1.5mL tubes, with gel filled cover	4 x 8	243 x 157 x 146	Polycarbonate	Each
454005	12 Place for 16mm and 15mL tubes	3 x 4	197 x 140 x 190	Polycarbonate	Each
454007	12 Place for 13mm tubes	3 x 4	197 x 140 x 190	Polycarbonate	Each



-20°C Mini Coolers

Item #	Description	Array	Size (mm)	Material	Unit
454021	12 Place for 1.5mL tubes	3 x 4	151 x 108 x 125	Polycarbonate	Each
454023	32 Place for 1.5mL tubes	4 x 8	243 x 157 x 146	Polycarbonate	Each
454023GC	32 Place for 1.5mL tubes with gel filled cover	4 x 8	243 x 157 x 146	Polycarbonate	Each
454025	20 Place for 1.5mL tubes	4 x 5	151 x 108 x 125	Polycarbonate	Each
454027	96 Place for 0.2mL PCR tubes	8 x 12	151 x 108 x 125	Polycarbonate	Each

Mini Coolers & Chillers

RAPID CHILLER

The new Globe Rapid Chiller provides rapid cooling of up to 12 biological samples in 1.5mL and 0.5mL tubes. This simple, no mess alternative to dry ice solvent baths will chill and re-chill samples for up to 45 minutes on the benchtop. Simply place the Rapid Chiller in a -20°C freezer for 24 hours before use and it's ready to chill or freeze samples in just a few minutes. Rapid chillers have a keyed lid and printed grid for easy sample identification and non-skid feet to prevent sliding on the benchtop.

- Material: Polycarbonate
- Array: 3 x 4

Globe #	Description	Size (mm)	Unit
454030	Rapid chiller, 12 place for 1.5ml tubes, PC	151 x 108 x 125	Each



454030

CRYOGENIC COOLER

The new Globe Scientific Cryogenic Cooler provides controlled cooling for cryogenic preservation and recovery of cells. When filled with 100% isopropyl alcohol and placed in a mechanical freezer, the cooler maintains the 1°C per minute cooling rate necessary for proper cell preservation. This controlled cooling improves cell recovery and viability versus snap freezing in liquid nitrogen. The cooler holds up to eighteen 1mL or 2mL cryogenic storage vials.

- 18 Place
- Material: Polycarbonate

Globe #	Description	Size (mm)	Unit
454000	Cooler for 1mL or 2mL cryogenic storage vials	117 Dia x 86	Each



454000



POLYURETHANE FOAM ICE TRAYS & BUCKETS

Globe Scientific ice buckets and ice trays are manufactured from polyurethane foam for excellent insulating properties and good chemical resistance.

Rectangular Ice Trays and Ice Buckets

Globe Scientific rectangular ice buckets and ice trays are suitable for use with liquid nitrogen, dry ice, wet ice, and salt solutions. Lids included with ice buckets and select ice trays limit evaporation for extended chilling. Molded handles provide a secure grip for easy transport.

Ice Trays without Lid

Volume	Dimensions	Unit	Item#			
			Black	Blue	Green	Red
1 Liter	210mm x 190mm x 105mm	Each	455020K	455020B	455020G	455020R
4 Liter	380mm x 270mm x 152mm	Each	455022K	455022B	455022G	455022R
9 Liter	500mm x 360mm x 160mm	Each	455024K	455024B	455024G	455024R

Ice Trays with Lid

Volume	Dimensions	Unit	Item#			
			Black	Blue	Green	Red
1 Liter	210mm x 190mm x 105mm	Each	455021K	455021B	455021G	455021R
4 Liter	380mm x 270mm x 152mm	Each	455023K	455023B	455023G	455023R
9 Liter	500mm x 360mm x 160mm	Each	455025K	455025B	455025G	455025R

Rectangular Ice Buckets

Volume	Dimensions	Unit	Item#			
			Black	Blue	Green	Red
2.5 Liter	340mm x 290mm x 120mm	Each	455010K	455010B	455010G	455010R
4.5 Liter	330mm x 280mm x 185mm	Each	455015K	455015B	455015G	455015R

Round Ice Bucket

- Can be used with dry ice, minced ice and cooling mixtures
- 15mm thick skinned polyurethane foam
- Integral handles allow easy lifting and carrying
- Resistant to liquid nitrogen for a few minutes
- Lid included

Capacity: 4.5 Liter
Dimensions: 200 x 270mm

Item #	Description	Unit
601000	Ice bucket, with lid, 4.5 Liter, red	Each



CryoClear™ Cryogenic Vials

Innovation

For the long-term storage of your precious samples.



Globe Scientific's CryoClear™ vials are designed for the cryogenic storage and transport of biological specimens at temperatures as low as -196°C .

The vials feature an innovative screw cap that is co-molded with a layer of thermoplastic elastomer (TPE). This special process provides the leak-proof benefits of an o-ring, while eliminating the risk of contamination and sample loss associated with the use of separate o-rings. The caps feature a star shaped top cavity that is engineered to work with automated capping / decapping equipment. Each vial is printed with a unique barcode that may be used for automated data collection, accurate sample inventory or to conceal the sample's identity.

Purity Guaranteed:

- Manufactured, assembled and packaged in an ISO 7 (Class 10,000) cleanroom and never exposed to outside contaminants. Meets FDA, GMP and ISO Quality Standards.
- Lot certified: samples from every lot are shipped to an independent laboratory where they are certified to be Human DNA free, DNase free, RNase free, Pyrogen free and ATP free.

Technical Details:

- Temperature range: -196° to 121°C
- Sterilized by beta radiation ($\text{SAL } 10^{-6}$)
- Pressure tested at 95 kPa (0.95 bar, 14 psi)

Material:

Tube: Medical grade polypropylene (PP)
Cap: Medical grade polyethylene (PE) co-molded with thermoplastic elastomer (TPE)

CryoClear™ vials are packaged in heavy-duty, tamper-proof, resealable bags of 50. They are available for purchase by the bag or case of 500.



Internal Threaded Vials (shown actual size)



External Threaded Vials (shown actual size)



Order Number	3002	3005	3008	3012	3013	3014	3015
Volume	2 mL	4 mL	5 mL	2 mL	3 mL	4 mL	5 mL
Height*	48.4 mm	76.4 mm	90.5 mm	47.0 mm	70.7 mm	75.1 mm	89.3 mm
Vial O.D.	12.5 mm	12.5 mm	12.5 mm	12.5 mm	12.5 mm	12.5 mm	12.5 mm
Style	Self standing	Self standing	Self standing	Self standing	Self standing	Self standing	Self standing
Bottom	Round	Round	Round	Round	Round	Round	Round

Packaging: 500/case, 10 bags of 50 vials (Also sold by the bag of 50)

*Height with caps attached.

Tamper Evident, Resealable and Lot Traceable Packaging

All CryoClear™ cryogenic vials are sold in heavy-duty, tamper evident resealable plastic bags.

- 50 vials per bag, 10 bags per case



CAP INSERTS

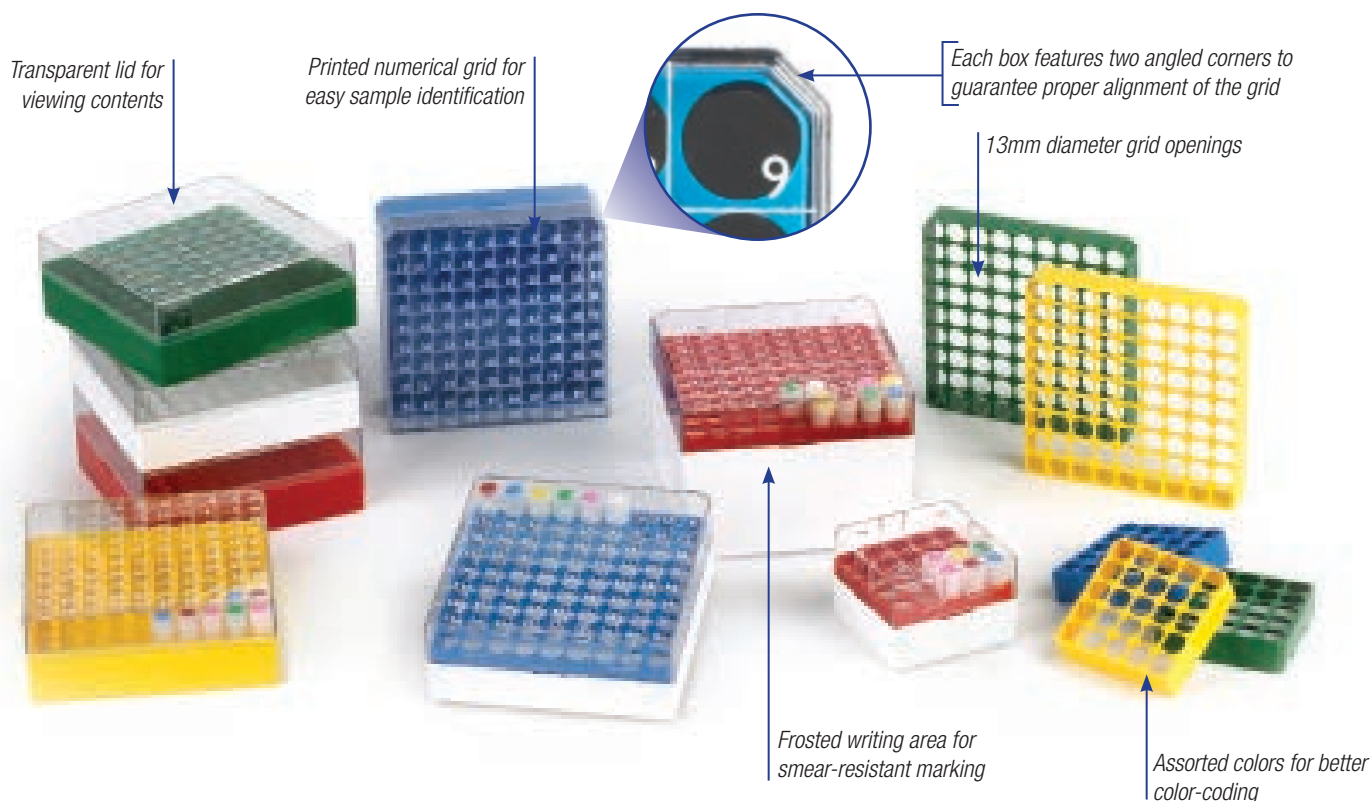
Cap inserts are available in assorted colors and are ideal for color coding and sample identification. The inserts nest easily into place on both internal and external caps.

- Polypropylene (PP)



Item #	Description	Unit
30079A	Gray ●	1000
30079B	Blue ●	1000
30079G	Green ●	1000
30079N	Orange ●	1000
30079P	Pink ●	1000
30079R	Red ●	1000
30079V	Violet ●	1000
30079W	White ○	1000
30079Y	Yellow ●	1000
30079AST6	Assorted	600

Cryogenic Vial Accessories



BIobox™ PLASTIC STORAGE BOXES WITH TRANSPARENT LIDS

Produced from polycarbonate (PC), these storage boxes are designed to withstand temperatures of -196°C to +121°C. The boxes are available in 25-place, 81-place and 100-place sizes and are available in assorted colors.

- Polycarbonate (PC)
- Temperature range: -196°C to +121°C
- Frosted writing area for smear-resistant marking
- Printed numerical grid for easy sample identification
- 13mm diameter grid openings
- Transparent lid for viewing contents
- Each box features two angled corners to guarantee proper alignment of the grid
- Autoclavable at 121°C, 15 psig (1 bar) for 20 minutes
- Boxes have vent holes for drainage and rapid freezing
- Fits in stainless steel freezer racks
- A plastic vial picker (item #30078) is supplied with each BioBox™

BioBoxes for 1 & 2mL Vials

Item #	Description		Dimensions (L x W x H)	Unit
3039B	25-place (5x5), blue	●	76 x 76 x 52mm (3" x 3" x 2")	8
3039G	25-place (5x5), green	●	76 x 76 x 52mm (3" x 3" x 2")	8
3039R	25-place (5x5), red	●	76 x 76 x 52mm (3" x 3" x 2")	8
3039Y	25-place (5x5), yellow	●	76 x 76 x 52mm (3" x 3" x 2")	8
3040B	81-place (9x9), blue	●	132 x 132 x 52mm (5.2" x 5.2" x 2")	5
3040G	81-place (9x9), green	●	132 x 132 x 52mm (5.2" x 5.2" x 2")	5
3040R	81-place (9x9), red	●	132 x 132 x 52mm (5.2" x 5.2" x 2")	5
3040Y	81-place (9x9), yellow	●	132 x 132 x 52mm (5.2" x 5.2" x 2")	5
3050B	100-place (10x10), blue	●	132 x 132 x 52mm (5.2" x 5.2" x 2")	5
3050G	100-place (10x10), green	●	132 x 132 x 52mm (5.2" x 5.2" x 2")	5
3050R	100-place (10x10), red	●	132 x 132 x 52mm (5.2" x 5.2" x 2")	5
3050W	100-place (10x10), white	○	132 x 132 x 52mm (5.2" x 5.2" x 2")	5
3050Y	100-place (10x10), yellow	●	132 x 132 x 52mm (5.2" x 5.2" x 2")	5

BioBoxes for 3, 4 & 5mL External & 5mL Internal Vials

Item #	Description		Dimensions (L x W x H)	Unit
3042B	81-place (9x9), blue	●	132 x 132 x 94mm (5.2" x 5.2" x 3.7")	4
3042G	81-place (9x9), green	●	132 x 132 x 94mm (5.2" x 5.2" x 3.7")	4
3042R	81-place (9x9), red	●	132 x 132 x 94mm (5.2" x 5.2" x 3.7")	4
3042Y	81-place (9x9), yellow	●	132 x 132 x 94mm (5.2" x 5.2" x 3.7")	4



VIAL PICKER

For the safe and convenient removal of frozen vials from storage boxes.

- Thermoplastic elastomer (TPE)

Item #	Color	Unit
30078	Blue	10

CARDBOARD STORAGE BOXES

These economical boxes are designed for the long term storage of cryogenic vials in freezer rack systems. They have a liquid-resistant outer coating.

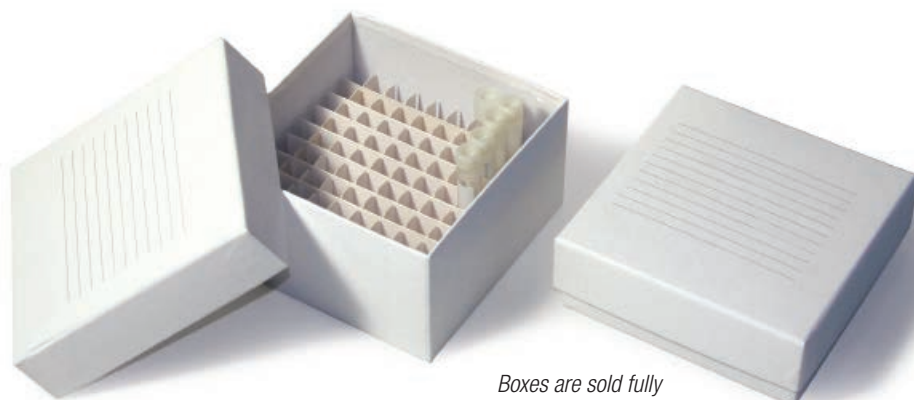
- Heavy-duty cardboard
- Boxes come fully assembled
- Temperature range: -196°C to +121°C
- Fits in stainless steel freezer racks
- Weep holes drain liquid and reduce moisture build-up

Additional colors available by special order.

WORKSTATION RACKS

Globe workstations accommodate both round bottom and self-standing CryoClear™ cryogenic vials. The self-standing vials lock into the rack for easy one-handed opening and closing of caps.

- 40-Place (10 x 4 format)
- Polycarbonate (PC)
- Anti-slip rubber feet
- Autoclavable at 121°C, 15 psig (1 bar) for 20 minutes
- Temperature range: -196°C to +121°C
- Dimensions: 215 x 100 x 25mm



Boxes are sold fully assembled and ready for use

Storage Box for 2" Tall Vials

Dimensions: 134 x 134 x 47mm (5.2" x 5.2" x 1.85")

Item #	Description	Units
3090	64 place (8x8), white, for up to 2" tall x 15mm wide vials	Each & 96
3091	81 place (9x9), white, for up to 2" tall x 13mm wide vials	Each & 96
3091R	81 place (9x9), red, for up to 2" tall x 13mm wide vials	Each & 96
3092	100 place (10x10), white, for up to 2" tall x 12mm wide vials	Each & 96




Storage Box for 3" Tall Vials

Dimensions: 134 x 134 x 76mm (5.2" x 5.2" x 3")

Item #	Description	Units
3094	64 place (8x8), white, for up to 3" tall x 15mm wide vials	Each & 48
3094Y	64 place (8x8), yellow, for up to 3" tall x 15mm wide vials	Each & 48
3095	81 place (9x9), white, for up to 3" tall x 13mm wide vials	Each & 48
3096	100 place (10x10), white, for up to 3" tall x 12mm wide vials	Each & 48

Cardboard storage boxes are also available for 15 and 50mL centrifuge tubes. See page 129.

Workstation Racks

Item #	Color	Unit
3049B	Blue 	Each
3049G	Green 	Each
3049R	Red 	Each



Anti-slip rubber feet hold workstation in place while removing caps

Self-standing vials lock into workstation





Specifications:

Maximum Speed	7000rpm (fixed)
Maximum RCF	2680xg
Rotor Capacity	Eight 0.2/0.5/1.5/2.0mL tubes, thirty-two 0.2mL PCR tubes or four PCR 8 strips
Run Time	Continuous operation
Power	20W
Noise level	≤45dB
Dimension (WxDxH)	160 x 170 x 122mm (6.3 x 6.7 x 4.8in)
Weight	0.5kg (1.1lbs)
Certifications	CE, TÜVus, FCC, MCA
Warranty	2 Years



Included accessories for
GCM Series Mini Centrifuges

GCM SERIES MINI CENTRIFUGES

Globe's GCM Series was designed with your lab in mind . . . whether you spin-down microcentrifuge tubes, PCR tubes or PCR strip tubes, the GCM will provide you with reliable performance use after use. Operating the GCM is quick and easy: close the lid to accelerate to 7,000rpm and simply open the lid for quick deceleration to stop.

Included with all GCM Mini Centrifuges are an eight-position microcentrifuge tube rotor for 1.5mL and 2.0mL tubes, a PCR tube rotor that accommodates 0.2mL tubes and strips as well as eight adapters for 0.2mL tubes and eight adapters for 0.5mL tubes. Changing rotors requires no tools — simply release the rotor catch and pull up to remove and press down to replace.

Features:

- Ideal for quick spin-downs and microfiltration
- EZ-Swap™ rotor attachments can be interchanged without tools
- Includes 8 position 1.5mL/2mL rotor, 32 position 0.2mL PCR tubes and strips rotor, 8 each 0.2ml adapters and 8 each 0.5ml adapters
- Available in your choice of 3 lid colors: red, blue and green
- Fast acceleration and braking
- “Close to start – open to stop” functionality
- 7000rpm speed (2680 x g)
- Small, lightweight and portable
- Runs quietly

Item #	Description	Unit
GCM-B	Mini Centrifuge, 8-Place, 7000rpm fixed speed, blue lid, 120v, 60Hz, US plug	Each
GCM-G	Mini Centrifuge, 8-Place, 7000rpm fixed speed, green lid, 120v, 60Hz, US plug	Each
GCM-R	Mini Centrifuge, 8-Place, 7000rpm fixed speed, red lid, 120v, 60Hz, US plug	Each
GCM-B-UK	Mini Centrifuge, 8-Place, 7000rpm fixed speed, blue lid, 240v, 50Hz, UK plug	Each
GCM-G-UK	Mini Centrifuge, 8-Place, 7000rpm fixed speed, green lid, 240v, 50Hz, UK plug	Each
GCM-R-UK	Mini Centrifuge, 8-Place, 7000rpm fixed speed, red lid, 240v, 50Hz, UK plug	Each
GCM-B-EU	Mini Centrifuge, 8-Place, 7000rpm fixed speed, blue lid, 240v, 50Hz, EU plug	Each
GCM-G-EU	Mini Centrifuge, 8-Place, 7000rpm fixed speed, green lid, 240v, 50Hz, EU Plug	Each
GCM-R-EU	Mini Centrifuge, 8-Place, 7000rpm fixed speed, red lid, 240v, 50Hz, EU plug	Each
GCM-ROT	Rotor, 7000rpm, 8-Place for 1.5 and 2.0mL microcentrifuge tubes	Each
GCM-PCR	Rotor, 7000rpm, 4 x 8 Position for 0.2mL PCR tubes and strips	Each
GCM-AD2	Rotor Adapter for 0.2mL microcentrifuge tubes	8
GCM-AD5	Rotor Adapter for 0.5mL microcentrifuge tubes	8

GCM-12 / HIGH SPEED MICROCENTRIFUGE

The GCM-12 is a revelation in microcentrifuges: small enough to fit any lab, yet feature-filled at a value that cannot be beat. The GCM-12 is compatible with numerous biological, chemistry, clinical and research applications including molecular biology, blood labs, DNA protocols and many more.

The GCM-12 includes an abundance of features found in much more expensive models, including a large LCD display with accurate control, a brushless DC motor, pulse operation for quick spins, high centrifugal force, interlocking safety lid, quiet running and more. The included twelve position rotor is compatible with 1.5mL and 2.0mL microcentrifuge tubes or with 0.2mL and 0.5mL microcentrifuge tubes when using optional adapters (sold separately).

Features:

- Compact yet powerful with max 15000rpm / 15100 x g
- Ideal for many laboratory applications
- Quick acceleration / deceleration
- Quiet operation
- Premium features at an obtainable cost

Advanced Features:

- Speed/RCF switch
- Pulse operation
- Audible alert function

Safety Features:

- Door interlock
- Excessive speed detection
- Excessive temperature detection
- Automatic self-diagnostics



Included 12-place rotor with aerosol lid holds both 1.5mL and 2.0mL microcentrifuge tubes

Item #	Description	Unit
GCM-12	High Speed Microcentrifuge, 12-place, 120-240v, 50/60Hz	Each
GCM-12-AD2	Rotor Adapters, for 0.2mL tubes	24
GCM-12-AD5	Rotor Adapters, for 0.5mL tubes	24

Specifications:

Speed	500-15000rpm in 100rpm increments
Maximum RCF	15100xg
Speed Accuracy	±20rpm
Rotor Capacity	Twelve 1.5mL/2.0mL tubes or twelve 0.2mL/0.5mL tubes with optional adapters
Run Time	30 sec — 99 min or continuous
Power	3A, 100W
Noise level	≤54dB
Acceleration Time	11 Seconds
Braking Time	9 Seconds
Dimension (WxDxH)	255 x 245 x 140mm (10.0 x 9.6 x 5.5in)
Weight	6kg (13.2lbs)
Certifications	EMC, CE, FCC, ICES, cTUVus, CB
Warranty	2 Years



Included 24-place aluminum alloy rotor holds both 1.5mL and 2.0mL microcentrifuge tubes

Included biosafety aerosol containment lid

Specifications	
Maximum Speed	15000rpm (200-15000rpm), increment:10rpm
Maximum RCF	21380xg, increment:10xg
Speed Accuracy	±20rpm
Rotor Capacity	Twenty-four 1.5mL/2.0mL tubes
Run Time	30 sec — 99 min or continuous
Power	5A, 200W
Acceleration Time	25 Seconds
Braking Time	25 Seconds
Dimension (WxDxH)	280 x 364 x 266mm (11.0 x 14.3 x 10.5in)
Weight	12kg / 26.5lbs
Certifications	CE, cTUVus, FCC, MCA
Warranty	2 Years

GCM-24 / MICROCENTRIFUGE

The GCM-24 is a powerful, feature-rich microcentrifuge at an affordable cost. It is easily programmable through a combination of LCD display, control buttons and parameter adjustment knob. The GCM-24 is compatible with numerous biological, chemistry, clinical and research applications including molecular biology, blood labs, DNA protocols and many more.

Standard features include a high strength 24 place 1.5mL and 2.0mL aluminum alloy rotor with biosafety aerosol containment lid (all of which can be fully autoclaved). Multi-flow air cooling ensures your temperature sensitive samples are safe. The GCM-24 features pulse operation for quick spins, a unique temperature monitor and much more.

Features:

- Reliable and intuitive LCD display
- Temperature monitoring for handling of critical samples sensitive to fluctuations
- Quiet operation
- Maintenance-free brushless DC motor
- Fully autoclavable 1.5mL and 2.0mL aluminum rotor with aerosol lid included as standard
- Includes pulse operation (quick spin)
- Patented multi-flow air cooling design ensures fast, efficient cooling of the rotor and helps lower energy consumption
- Optional rotors available

Advanced Features:

- Speed/RCF switch
- Quick spin function
- Audible alert function

Safety Features:

- Dual door safety interlock
- Excessive speed detection
- Automatic internal diagnostics



The GCM-24 can be easily programmed using the intuitive control panel buttons and parameter adjustment knob

Item #	Description	Unit
GCM-24	Microcentrifuge, 120v, 60Hz, US plug, with 24-place rotor	Each
GCM-24-UK	Microcentrifuge, 230v, 50Hz, UK plug, with 24-place rotor	Each
GCM-24-EU	Microcentrifuge, 230v, 50Hz, EU plug, with 24-place rotor	Each
GCM-24-5MLR	Rotor with Lid, Fixing Clips & O-Ring, 18-place for 5mL culture tubes	Each
GCM-24-5ML	Rotor with Lid, Fixing Clips & O-Ring, 2-place for 5mL Eppendorf style tubes	Each
GCM-24-05ML	Rotor with Lid, Fixing Clips & O-Ring, 36-place for 0.5mL microcentrifuge tubes	Each
GCM-24-PCR	Rotor with Lid, Fixing Clips and O-Ring, 4-place for 8 position 0.2mL PCR strips	Each
GCM-24-AD2	Rotor Adapters, for 0.2mL tubes	24
GCM-24-AD5	Rotor Adapters, for 0.5mL tubes	24
GCM-24-AD52	Rotor Adapters for use with GMC-24-05ML rotor, for 0.2mL tubes	36



GCM-R-24 / REFRIGERATED MICROCENTRIFUGE

Globe Scientific's GCM-R-24 Refrigerated Microcentrifuge is based on the solid foundation of the GCM-24 and adds refrigerated control for your critical temperature sensitive samples. Suitable for various applications, including molecular biology, chemistry, and more, the GCM-R-24 has an intuitive button and knob interface for quick programming, a high strength 24 place aluminum alloy rotor with a biosafety aerosol containment lid (all of which can be fully autoclaved), a powerful yet quiet compressor for fast, accurate temperature control and much more. The GCM-R-24 can cool its rotor chamber and samples down to 4°C within just seven minutes of operation — even at maximum speed and capacity!

Features:

- Pre-cooling ensures optimal protection of the sample before operation
- Guaranteed 4°C cooling of both chamber and samples within only 7 minutes — even at maximum speed and capacity utilization
- Audible alert function
- Dual lid lock function ensures samples are kept at temperature even after centrifugation
- Intermittent temperature control mode, CFC-free refrigerant and low carbon life rotor capacity
- Fully autoclavable aluminum rotor with aerosol lid included as standard
- Optional rotors available
- Quiet operation (noise level ≤ 54dB)
- Maintenance-free brushless DC motor

Advanced Features:

- Speed/RCF switch
- Quick spin function
- Audible alert function

Safety Features:

- Dual door safety interlock
- Over-temperature detection
- Excessive speed detection
- Automatic internal diagnostics



The GCM-R-24 can be easily programmed using the intuitive control panel buttons and parameter adjustment knob



Included 24-place aluminum alloy rotor holds both 1.5mL and 2.0mL microcentrifuge tubes

Included biosafety aerosol containment lid

Specifications

Maximum Speed	15000rpm (200-15000rpm), increment:10rpm
Maximum RCF	21380xg, increment:10xg
Speed Accuracy	±20rpm
Temperature Range	-20°C - 40°C
Rotor Capacity	Twenty-four 1.5mL/2.0mL tubes
Run Time	30 sec — 99 min or continuous
Power	10A, 400W
Acceleration Time	25 Seconds
Braking Time	25 Seconds
Dimension (WxDxH)	338 x 580 x 324mm (13.3 x 22.8 x 12.8in)
Weight	30kg / 66.1lbs
Certifications	CE, cTUVus, FCC, MCA
Warranty	2 Years

Item #	Description	Unit
GCM-R-24	Refrigerated Microcentrifuge, 120v, 60Hz, US plug, with 24-place rotor	Each
GCM-R-24-UK	Refrigerated Microcentrifuge, 230v, 50Hz, UK plug, with 24-place rotor	Each
GCM-R-24-EU	Refrigerated Microcentrifuge, 230v, 50Hz, EU plug, with 24-place rotor	Each
GCM-24-5MLR	Rotor with Lid, Fixing Clips & O-Ring, 18-place for 5mL culture tubes	Each
GCM-24-5ML	Rotor with Lid, Fixing Clips & O-Ring, 2-place for 5mL Eppendorf style tubes	Each
GCM-24-05ML	Rotor with Lid, Fixing Clips & O-Ring, 36-place for 0.5mL microcentrifuge tubes	Each
GCM-24-PCR	Rotor with Lid, Fixing Clips and O-Ring, 4-place for 8 position 0.2mL PCR strips	Each
GCM-24-AD2	Rotor Adapters, for 0.2mL tubes	24
GCM-24-AD5	Rotor Adapters, for 0.5mL tubes	24
GCM-24-AD52	Rotor Adapters for use with GMC-24-05ML Rotor, for 0.2mL tubes	36



GCC-MP-50ML8 — Aluminum alloy rotor, 8-place for 50mL centrifuge tubes



GCC-MP-15ML — Aluminum alloy rotor, 30-place for 15mL centrifuge tubes

GCC-MP / MULTI-PURPOSE CLINICAL CENTRIFUGE

The Globe Scientific GCC-MP Multi-Purpose Clinical Centrifuge is a large capacity centrifuge that can be used in a variety of clinical lab applications. With a wide selection of fixed rotors as well as a swingout rotor and buckets, the GCC-MP is compatible with virtually any tube typically found in the clinical lab environment and can be customized to your specific applications and methods.

Safety features include door interlock, overspeed detection, over temperature detection and imbalance protection. Operation can be timed or momentary (pulse) and set by speed or G-force. Automatic rotor detection is also included.

Features:

- Simple yet feature-rich operation
- Fixed angle, swing bucket and microplate rotor options available
- Numerous safety features
- Accommodates tubes from 0.2mL to 100mL and microplates

Safety Features:

- Door interlock
- Overspeed detector
- Over-temperature detector
- Imbalance protection
- Automatic rotor identification

For separations and spin downs in tubes from 0.2mL to 100mL and microplates, choose the GCC-MP!

Specifications:

Maximum Speed	300-6000rpm, increment: 10rpm
Maximum RCF	4300×g
Speed Accuracy	±20rpm
Run Time	30 sec — 99 min or continuous
Program Storage	Yes, up to 9
Power	10A, 660W
Display	Backlit LCD
Acceleration Time	9 Seconds
Braking Time	10 Seconds
Dimension (WxDxH)	445 × 579 × 269mm (17.5 x 22.8 x 10.6in)
Weight	36kg (79.4lbs)
Certifications	CE, cTUVus, FCC, MCA
Warranty	2 Years

ACCESSORIES FOR GCC-MP MULTI-PURPOSE CLINICAL CENTRIFUGE



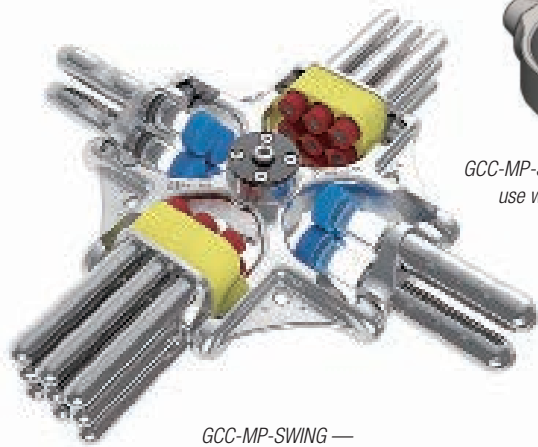
GCC-MP-5ML — Aluminum alloy rotor with lid, fixing clips and o-ring, 18-place for 5mL conical bottom tubes



GCC-MP-2ML30 — Aluminum alloy rotor with lid, fixing clips and o-ring, 30-place for 1.5mL and 2.0mL microcentrifuge tubes



GCC-MP-PCR — Aluminum alloy rotor with lid, fixing clips and o-ring, 12-place for 0.2mL 8 position PCR strip



GCC-MP-SWING — Aluminum alloy swing-out rotor, 4-place for buckets (buckets / tube adapters sold separately)



GCC-MP-SWING-100ML4 — Bucket for use with GCC-MP-SWING rotor, for 4 x 100mL tubes



GCC-MP-SWING-50ML8 — Buckets for use with GCC-MP-SWING rotor, for 8 x 50mL tubes



GCC-MP-SWING-15ML16 — Buckets for use with GCC-MP-SWING rotor, for 16 x 10mL, 12mL and 15mL tubes



GCC-MP-SWING-7ML36 — Buckets for use with GCC-MP-SWING rotor, for 36 x 3mL and 7mL tubes



GCC-MP-SWING-PLATE — Aluminum alloy swing-out rotor for microplates (2-place)

Item #	Description	Unit
GCC-MP	Clinical Centrifuge, multi-purpose, 120V, 60Hz, US plug (rotor not included)	Each
GCC-MP-UK-EU	Clinical Centrifuge, multi-purpose, 240V, 50Hz, UK & EU plugs (rotor not included)	Each
GCC-MP-2ML30	Rotor with Lid, aluminum alloy, fixing clips and o-ring, 6000rpm max, 30-place for 1.5mL and 2.0mL microcentrifuge tubes	Each
GCC-MP-2ML60	Rotor with Lid, aluminum alloy, fixing clips and o-ring, 6000rpm max, 60-place for 1.5mL and 2.0mL microcentrifuge tubes	Each
GCC-MP-5ML	Rotor with Lid, aluminum alloy, fixing clips and o-ring, 6000rpm max, 18-place for 5mL conical bottom tubes	Each
GCC-MP-15ML	Rotor, aluminum alloy, 4500rpm max, 30-place for 15mL centrifuge tubes	Each
GCC-MP-15ML-ADP	Rotor Adapter Risers, for use with 3mL tubes	10
GCC-MP-50ML6	Rotor with Lid, aluminum alloy, fixing clips and o-ring, 6000rpm max, 6-Place for 50mL Centrifuge Tubes	Each
GCC-MP-50ML8	Rotor, aluminum alloy, 5000rpm max, 8-place for 50mL centrifuge tubes	Each
GCC-MP-PCR	Rotor with Lid, aluminum alloy, fixing clips and o-ring, 6000rpm max, 12-place for 0.2mL 8 position PCR strips	Each
GCC-MP-SWING	Rotor, swing-out, aluminum alloy, 4-place for buckets (buckets / tube adapters sold separately)	Each
GCC-MP-SWING-100ML4	Buckets, for use with GCC-MP-SWING Rotor, for 4 x 100mL tubes (1 tube per bucket)	4
GCC-MP-SWING-50ML8	Buckets, for use with GCC-MP-SWING Rotor, for 8 x 50mL tubes (2 tubes per bucket)	4
GCC-MP-SWING-15ML16	Buckets, for use with GCC-MP-SWING Rotor, for 16 x 10mL, 12mL and 15mL tubes (4 tubes per bucket)	4
GCC-MP-SWING-7ML36	Buckets, for use with GCC-MP-SWING Rotor, for 36 x 3mL and 7mL tubes (9 tubes per bucket)	4
GCC-MP-SWING-PLATE	Rotor, swing-out, aluminum alloy, 4000rpm max, 2-place for microplates	Each

Vortex Mixers



For the best vortex mixer and wide versatility, choose the Globe Scientific GVM-AS!

GVM-AS / VARIABLE SPEED VORTEX MIXER

The GVM-AS Variable Speed Vortex Mixer is the best choice for vortex mixing in your lab. Speed adjustment between 100-2500rpm is as easy as rotating the analog dial. A slight press on the top cup quickly and efficiently vortexes virtually any tube. Continuous run function and available adapters allow for simultaneous mixing of multiple samples. A heavy-duty cast aluminum base and suction cup feet make the GVM-AS extremely stable despite its compact footprint.

Features:

- Touch operation or continuous mode
- Variable speed control from 0 to 2500rpm
- Suitable for various tube types and mixing applications with optional adapters
- Specially designed vacuum suction feet for stability
- Robust cast aluminum construction
- Small footprint
- Rubber suction feet ensure placement and mitigate vibration
- Wide variety of accessories for virtually every tube used in your lab
- Spill resistant chassis

Item #	Description	Unit
GVM-AS	Variable Speed Vortex Mixer, 120v, 60Hz, US plug	Each
GVM-AS-UK	Variable Speed Vortex Mixer, 230v, 50Hz, UK plug	Each
GVM-AS-EU	Variable Speed Vortex Mixer, 230v, 50Hz, EU plug	Each



For simple, reliable vortex mixing, choose the GVM-FS!

GVM-FS / FIXED SPEED VORTEX MIXER

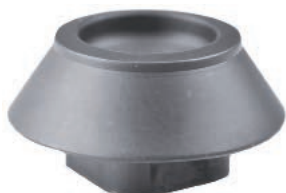
The GVM-FS has a fixed speed of 2500rpm. The small 4mm orbit of the GVM-FS creates a 'vibratory' motion that quickly ensures homogeneity of your samples. With a slight press on the top cup, you can quickly and efficiently vortex virtually any tube. For mixing a larger number of tubes, you can choose constant run and select from a number of compatible accessories preferred for your specific tube format or method. The GVM-FS has a small footprint yet is extremely stable due to its cast aluminum base and available suction cup feet.

Features:

- Touch operation or continuous mode
- Fixed speed control of 2500rpm
- Used for various mixing applications with optional adapters
- Specially designed available vacuum suction feet for body stability
- Robust aluminum-cast construction
- Small footprint yet extremely stable
- Rubber suction feet ensure placement and mitigate vibration
- Wide variety of accessories for virtually every tube used in your lab
- Spill resistant chassis

Item #	Description	Unit
GVM-FS	Fixed Speed Vortex Mixer, 120v, 60Hz, US plug	Each
GVM-FS-UK	Fixed Speed Vortex Mixer, 230v, 50Hz, UK plug	Each
GVM-FS-EU	Fixed Speed Vortex Mixer, 230v, 50Hz, EU plug	Each

ACCESSORIES FOR GVM-AS AND GVM-FS VORTEX MIXERS



GVM-AS-CUP — Replacement cup



GVM-AS-ADAPT48 — 48 place foam tube adapter for 6mm tubes



GVM-AS-ADAPT15 — 15 place foam tube adapter for 10mm tubes



GVM-AS-ADAPT12 — 12 place foam tube adapter for 12mm tubes



GVM-AS-ADAPT8-16 — 8 place foam tube adapter for 16mm tubes



GVM-AS-ADAPT8-20 — 8 place foam tube adapter for 20mm tubes



GVM-AS-PLATE — Universal top plate for use with Foam Tube Adapters



GVM-AS-PAD — Dimpled platform pad



GVM-AS-FOOT — Rubber replacement suction foot with screw

Item #	Description	Unit
GVM-AS-CUP	Tube Replacement Cup, rubber (for tubes and vessels with a diameter less than 30mm)	Each
GVM-AS-ROD	Tube Holding Rod for foam tube adapters	Each
GVM-AS-PLATE	Top Plate, round, universal, 100mm (to be used with all Foam Tube Adapters)	Each
GVM-AS-ADAPT48	Tube Adapter, foam, 48-place, for 6mm tubes (Must use with Top Plate VM-AS-PLATE)	Each
GVM-AS-ADAPT15	Tube Adapter, foam, 15-place, for 10mm tubes (Must use with Top Plate VM-AS-PLATE)	Each
GVM-AS-ADAPT12	Tube Adapter, foam, 12-place, for 12mm tubes (Must use with Top Plate VM-AS-PLATE)	Each
GVM-AS-ADAPT8-16	Tube Adapter, foam, 8-place, for 16mm tubes (Must use with Top Plate VM-AS-PLATE)	Each
GVM-AS-ADAPT8-20	Tube Adapter, foam, 8-place, for 20mm tubes (Must use with Top Plate VM-AS-PLATE)	Each
GVM-AS-PAD	Platform Dimpled Pad, 99mm diameter (Must use with Top Plate VM-AS-PLATE)	Each
GVM-AS-FOOT	Rubber Vacuum Suction Foot with screw	Each

Specifications for GVM-AS and GVM-FS

Voltage	110-120V/220-230V, 50/60Hz
Power	60W
Mixing Motion	Orbital
Orbital Diameter	4mm
Motor Type	Shaded pole motor
Motor Rating Input	58W
Motor Rating Output	10W
Speed (GVM-FS)	2500rpm (fixed)
Speed Range (GVM-AS)	0-2500rpm
Speed Display (GVM-AS)	Scale
Run Type	Touch operation or continuous
Dimensions (WxDxH)	127 x 130 x 160mm (5 x 5.1 x 6.3in)
Weight	3.5kg (7.7lbs)
Operating Temperature	5° - 40°C
Permissible Relative Humidity	80%RH (non-condensing)
Protection Class	IP21
Warranty	2 Years

Sterile Transfer Pipets

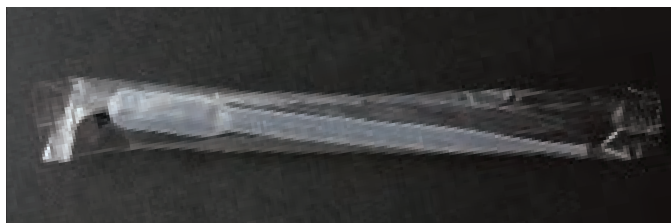
FEATURES

- Non-toxic, chemically inert to biological fluids and most acids
- Can be heat sealed to use for liquid storage or transport
- Can be frozen in liquid nitrogen
- Custom grade of low-density polyethylene (LDPE) makes these transfer pipets non-slippery and easy to grip with gloves

TECHNICAL INFORMATION

- Temperature range: -50°C to 90°C
- Can be gas (EtO) sterilized

Sterile Packaging



Individually-wrapped (1/pack), sterile

Globe Scientific offers a full line of sterile plastic transfer pipets for critical liquid handling procedures.

GRADUATED TRANSFER PIPETS

Actual size

3 mL capacity – graduated to 1 mL – small bulb

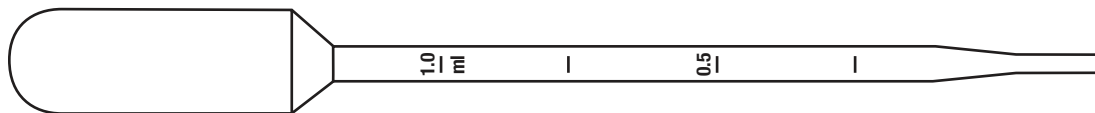


Catalog No.	Sterility	Packaging Information	Unit	Technical Data
137135	Sterile Sterile	Individually wrapped, 100/bag, 4 bags/case Individually wrapped, 100/bag	400 100	<ul style="list-style-type: none"> • Capacity: 3 mL • Drops/mL: 25 • Bulb draw: 2.2 mL • Total length: 140 mm (5.5") • Stem diameter: 4.4 mm (0.17") • Tip diameter: 2.4 mm (0.09") • Graduated up to: 1 mL • Graduation increments: 0.25 mL

GRADUATED TRANSFER PIPETS

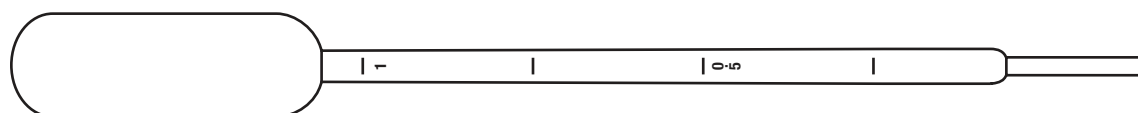
Actual size

5 mL capacity – graduated to 1 mL – large bulb



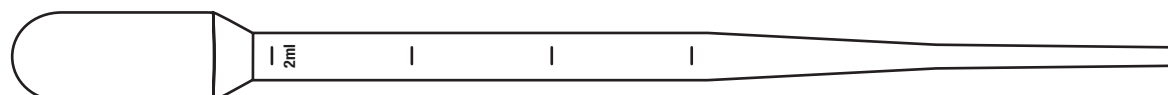
Catalog No.	Sterility	Packaging Information	Unit	Technical Data
137038	Sterile	Individually wrapped, 100/bag, 4 bags/case Individually wrapped, 100/bag	400 100	<ul style="list-style-type: none"> Capacity: 5 mL Drops/mL: 24 Bulb draw: 3.4 mL Total length: 145 mm (5.7") Stem diameter: 4.8 mm (0.19") Tip diameter: 2.7 mm (0.11") Graduated up to: 1 mL Graduation increments: 0.25 mL

5 mL capacity – graduated to 1 mL – large bulb



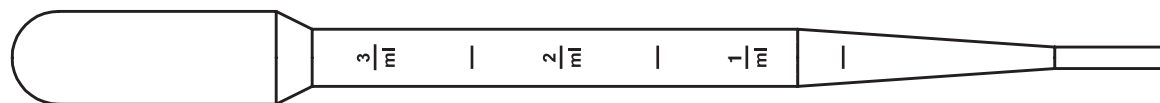
Catalog No.	Sterility	Packaging Information	Unit	Technical Data
137018	Sterile	Individually wrapped peel packs, 400 peel packs/case	400	<ul style="list-style-type: none"> Capacity: 5 mL Drops/mL: 25 Bulb draw: 3.4 mL Total length: 148 mm (5.8") Stem diameter: 4.8 mm (0.19") Tip diameter: 2.7 mm (0.11") Graduated up to: 1 mL Graduation increments: 0.25 mL

5 mL capacity – graduated to 2 mL



Catalog No.	Sterility	Packaging Information	Unit	Technical Data
137040-S01	Sterile	Individually wrapped, 100 pcs/bag, 5 bags/case	500	<ul style="list-style-type: none"> Capacity: 5 mL Drops/mL: 23 Bulb draw: 1.8 mL Total length: 155 mm (6.1") Stem diameter: 6.5 mm (0.25") Tip diameter: 2.8 mm (0.11") Graduated up to: 2 mL Graduation increments: 0.5 mL

7 mL capacity – graduated to 3 mL – large bulb



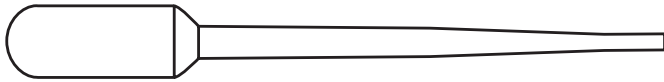
Catalog No.	Sterility	Packaging Information	Unit	Technical Data
135038	Sterile Sterile	Individually wrapped, 100/bag, 4 bags/case Individually wrapped, 100/bag	400 100	<ul style="list-style-type: none"> Capacity: 7 mL Drops/mL: 20 Bulb draw: 3.2 mL Total length: 160 mm (6.3") Stem diameter: 7.9 mm (0.31") Tip diameter: 3 mm (0.12") Graduated up to: 3 mL Graduation increments: 0.5 mL

Transfer Pipets

NON-GRADUATED TRANSFER PIPETS

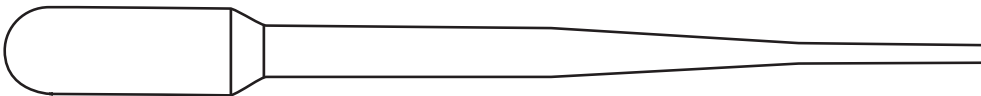
Actual size

1.7 mL capacity



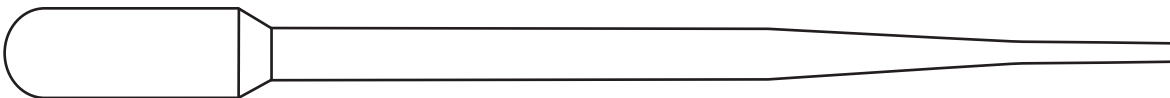
Catalog No.	Sterility	Packaging Information	Unit	Technical Data
138020-S01	Sterile	Individually wrapped, 100pcs/bag, 5 bags/case	500	<ul style="list-style-type: none"> Capacity: 1.7 mL Drops/mL: 25 Bulb draw: 0.9 mL Total length: 87 mm (3.4") Stem diameter: 4.5 mm (0.18") Tip diameter: 2.4 mm (0.09")

4 mL capacity



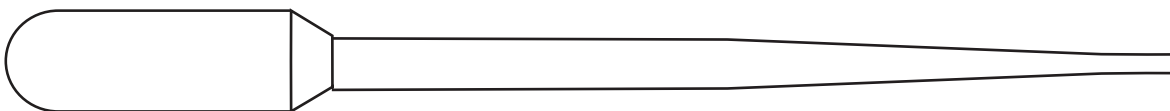
Catalog No.	Sterility	Packaging Information	Unit	Technical Data
138060-S01	Sterile	100 pcs/bag, 4 bags/case	400	<ul style="list-style-type: none"> Capacity: 4 mL Drops/mL: 25 Bulb draw: 2 mL Total length: 130 mm (5.1") Stem diameter: 6.6 mm (0.26") Tip diameter: 2.5 mm (0.1")

5 mL capacity



Catalog No.	Sterility	Packaging Information	Unit	Technical Data
138050-S01	Sterile	Individually wrapped, 100pcs/bag, 5 bags/case	500	<ul style="list-style-type: none"> Capacity: 5 mL Drops/mL: 23 Bulb draw: 2 mL Total length: 155 mm (6.1") Stem diameter: 6.8 mm (0.27") Tip diameter: 2.4 mm (0.09")

7 mL capacity – standard



Catalog No.	Sterility	Packaging Information	Unit	Technical Data
138080-S01	Sterile	Individually wrapped, 100pcs/bag, 5 bags/case	500	<ul style="list-style-type: none"> Capacity: 7 mL Drops/mL: 20 Bulb draw: 3.2 mL Total length: 155 mm (6.1") Stem diameter: 7.8 mm (0.31") Tip diameter: 3.1 mm (0.12")

A full range of additional sizes and styles are available. Please contact our Sales Department for information and samples.

Specimen Transport Bags / Bottles

Globe Scientific's specimen transport bags are designed for the safe transportation of specimens and documentation. Each bag is printed with the biohazard symbol and offers checkmark boxes to indicate special handling instructions.

SPECIMEN TRANSPORT BAGS - ZIPPER CLOSURE

- 2 mil gauge polyethylene (PE)
- Attached document compartment
- Zipper closure allows repeated access to specimen
- Imprinted with biohazard symbol and score line
- Item #4922 features an absorbent pad that can hold 60mL of urine and 35mL of blood

Item #	Description	Unit
4922	6" x 9" specimen transport bag, score line, zipper closure, with absorbent pad	500



4922 — 6" x 9" specimen bag with absorbent pad

SPECIMEN TRANSPORT BAGS - GLUE CLOSURE

The special glue closure of our specimen transport bags offer a liquid-tite tamper evident seal. Simply pull off the liner to expose the glue adhesive and press to close. Item #4923 features a 3" x 5" liquid absorbent pad that quickly absorbs aqueous solutions or bodily fluids providing for safe transportation of specimens.

- 2 mil gauge polyethylene (PE)
- Attached document compartment
- Glue closure tamper evident seal
- Imprinted with biohazard symbol
- Perfect for the transport of drug testing products

Item #	Description	Unit
4923	6" x 9" specimen transport bag, glue closure, with absorbent pad	500



4921 & 4923 — 6" x 9" glue closure transport bags

Additional size and style specimen bags are available. Please contact our Sales Department for details.

Diamond® RealSeal™ Plastic Laboratory Bottles

WIDE MOUTH BOTTLES

These wide mouth bottles safely hold small volumes of reagents and are perfect for inclusion with test kits.

High-Density Polyethylene (HDPE)

- Safe for freezer storage down to -100°C
- Resistant to most corrosives and suitable for a wide variety of laboratory uses

Item #	Capacity	Closure Size	Neck I.D.	Bottle O.D.	Height w/Cap	Units
7010030	30mL	28mm	21mm	36mm	63mm	12 & 72
7010060	60mL	28mm	21mm	39mm	85mm	12 & 72

Additional sizes, styles and substrates are available. Please contact our Sales Department for information.



7010030 — 30mL

7010060 — 60mL

EXCEPTIONAL QUALITY LAB SUPPLIES



In addition to a wide selection of products used for COVID-19 sample collection, processing and testing, Globe offers a full portfolio of products to support the research and development of therapeutics and vaccines. Please check our website or catalog to view our full offering of laboratory consumables and benchtop equipment.

- Analyzer Consumables
- Bags
- Beakers
- Bench Top Equipment
- Biohazard Specimen Bags
- Blood Collection Products
- Bottles
- Capillary Tubes
- Centrifuges
- Centrifuge Tubes
- Containers
- Cryogenic Vials
- Cylinders
- Drug Test Containers
- Drying Rack
- ESR Systems
- Formalin Filled Containers
- Formalin Neutralization
- Funnels
- Inoculation Loops
- Microhematocrit Tubes
- Microcentrifuge Tubes
- Microscope Slides
- Microtitration Plates
- Pathology Containers
- Pipettors
- Pipette Tips
- Racks
- Reagent Reservoirs
- Serological Pipettes
- Slide Mailers
- Test Tubes
- Transfer Pipets
- Urinalysis Products
- Vortex Mixers
- Weighing Dishes



www.globescientific.com

Globe Scientific Inc.

400 Corporate Drive • Mahwah, New Jersey 07430 • USA

Customer service, sales and technical support:

Phone 1 (800) 394-4562 • 1 (201) 599-1400

Fax 1 (201) 599-1406

E-mail mail@globescientific.com



TM