

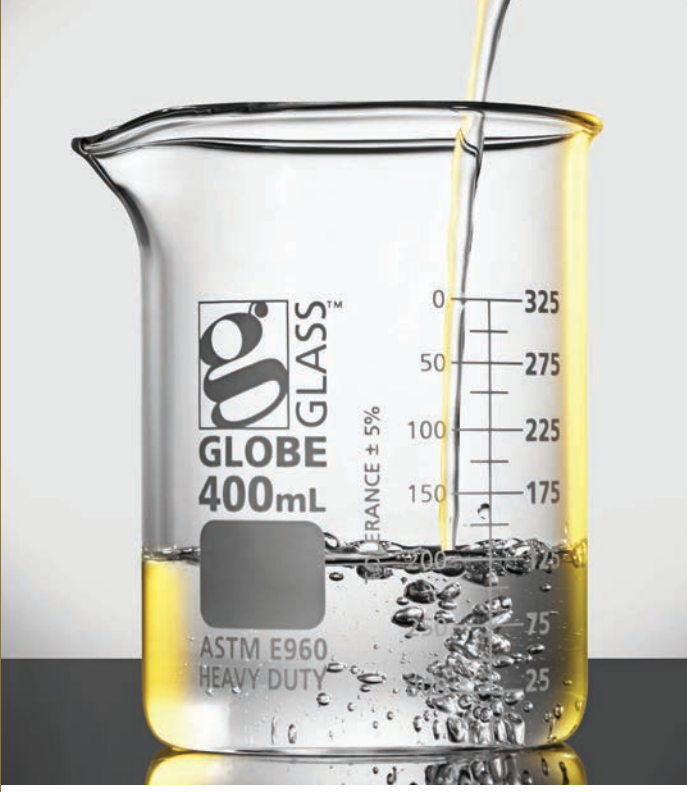


# Heavy Duty Low Form Griffin Style Beakers

Uniform wall thickness, flat bottoms, and low expansion 3.3 Borosilicate glass make Globe Glass™ heavy duty low form Griffin style beakers strong and durable. Thicker walls improve mechanical strength to protect against breakage in the most rigorous uses. Beaded rims and formed spouts facilitate accurate and steady pouring of liquids. Globe Glass low form Griffin style beakers are available in sizes from 250mL to 4000mL.

- Meet ASTM E960 Type II Specifications
- Made exclusively from ASTM E438, Type I, Class A, 3.3 borosilicate glass
- GlassGuard™ packaging system protects against transit damage
- Thicker walls protect against damage
- Formed pour spout for easy pouring
- High resistance to chemicals
- Uniform wall thickness
- Dual metric scale graduations
- Durable white enamel printing
- Large white marking area

*Note: Not recommended for use on hot plates*





## Heavy Duty Low Form Griffin Style Beakers

Item #	Capacity (mL)	Height (mm)	Widest Outside Diameter (mm)	Graduation Interval (mL)	Graduation Range (mL)	Pack Qty	Case Qty
8020250	250	95	67	25	25 to 200	12	48
8020400	400	113	77	25	25 to 325	12	48
8020600	600	125	88	50	50 to 500	6	36
8021000	1000	157	108	50	50 to 1000	6	24
8022000	2000	190	130	100	200 to 1800	4	8
8024000	4000	257	161	250	500 to 3500	1	4

### Globe Glass™ Gold Standards

#### Premium Raw Materials

Globe Glass™ laboratory glassware is made exclusively from ASTM E438, Type I, Class A, 3.3 borosilicate glass for excellent resistance to thermal shock and high chemical resistance to most acids, alkalis, and solvents.

#### ASTM Compliant Designs

Globe Glass laboratory glassware meets applicable ASTM standards for volume, shape, dimensions, graduation markings, and calibration. These ASTM standards are clearly marked for easy confirmation that each piece of Globe Glass laboratory glassware will meet the needs of laboratory professionals.

#### Precision Manufacturing

Computer controlled, automated production lines ensure that Globe Glass laboratory glassware has consistent wall thickness, flat bottoms free of striations, and precise forming of rims and spouts.

#### White Enamel Marking

Permanent white enamel markings are ASTM compliant and easy to read. Dual metric scale graduations are included on most items for easy reference while filling or dispensing. Most Globe Glass laboratory glassware items include a large, convenient marking area for coding or identification.

#### Quality Systems

Globe Glass laboratory glassware is manufactured under stringent quality controls. Manufacturing facilities are ISO 9001 certified and in-house calibration is performed in an ISO 17025 certified laboratory.

#### Exclusive GlassGuard™ Packaging

Engineered to meet the hazards and rigors of transportation, GlassGuard™ packaging protects Globe Glass laboratory glassware during shipment. Robust packaging designs begin at the pack level and extend to the full case packaging. Heavy duty, multi-layered corrugated container systems meet rigid quality standards and testing protocols to provide exceptional protection from damage, even in the small parcel shipping environment.



Scan to learn what makes GlassGuard packaging so special.



Heavy duty Griffin style beakers available in 6 sizes.



[www.globescientific.com](http://www.globescientific.com)

Phone: 1 (800) 394-4562 • 1 (201) 599-1400

Fax: 1 (201) 599-1406

E-mail: [mail@globescientific.com](mailto:mail@globescientific.com)